



mazda

zoom-zoom



3
YEAR
UNLIMITED KM
WARRANTY &
SERVICE PLAN

MAZDA MX-5

mazda.co.za     | The impossible made possible.



The impossible made possible

The Mazda MX-5 is Zoom-Zoom in its purest form. Lighter and more streamlined than ever, the open-top MX-5 brings car and driver together in the true spirit of 'Jinba Ittai' – the philosophy of 'horse and rider as one'. The lean, muscular lines of 'KODO – Soul of Motion' design capture the moment when energy becomes motion, while the uncluttered interior is designed to feel like an extension of the driver. The Mazda MX-5's reputation for driving pleasure is heightened even further with the outstanding performance of SKYACTIV TECHNOLOGY, along with the added confidence of i-ACTIVSENSE advanced safety technologies. As the world's most popular lightweight sports car for over two decades, the iconic Mazda MX-5 excites every sense like only a true roadster can.



魂動

KODO | SOUL of MOTION



Designed for the driver

The MX-5 captures Mazda's signature KODO Design philosophy in its most exciting form, with every angle and contour poised for action. For wind-in-the-hair exhilaration, the roof glides seamlessly away from view with the push of a button. When closed, the roof reinforces the MX-5's striking shape, with the new RF hard-top models featuring a classic fastback silhouette. Incorporating true sports car elements with the spirit of its three previous generations, the MX-5 commands a striking road presence.



Car and driver become one

The Mazda MX-5 is the epitome of the driver's car, with every element carefully designed to evoke the feeling of being at one with the vehicle. Interior panels featuring matching exterior paintwork comfortably envelop the driver for a sports luxe feel in the cockpit. Understated, quality finishes like leather feature throughout, while symmetrically arranged controls are positioned for optimal driving position and comfort. In the RF model, you'll experience reduced cabin noise, along with one of the world's fastest roof opening- and closing times. Everything about the uncluttered, driver-focused interior has been considered to maximise the driving pleasure of the roadster experience.



The evolution of Jinba Ittai

The intuitive relationship between car and driver can be felt in the ultra-responsive handling of the Mazda MX-5. The new generation has experienced a significant weight loss, yet an increased sense of rigidity. An enhanced feeling of balance and control is a result of perfect 50:50 front-rear weight distribution. With a lowered centre of gravity and the engine brought closer to the vehicle's centre, you'll experience responsiveness and stability resulting in the purest embodiment of Jinba Ittai yet. The car becomes a true extension of the driver, responding with innate agility to every command.

SKYACTIV TECHNOLOGY

Breakthrough SKYACTIV TECHNOLOGY is behind the Mazda MX-5's exhilarating yet economical performance. The innovation is applied to every element of the vehicle, unlocking superior handling and better fuel efficiency.



SKYACTIV-G 2.0L

Developed to offer driving pleasure in all conditions, the SKYACTIV-G 2.0L engine delivers maximum power of 118kW and torque of 200Nm, with an impressive fuel economy of 6.7L/100km. The reduced weight and greater combustion efficiency means the driver gets an engine they can always count on in the high RPM range.



SKYACTIV-TRANSMISSION

The 6-speed SKYACTIV automatic transmission delivers a lively performance with superior fuel economy. As one of the world's lightest transmissions, it helps reduce the weight of the Mazda MX-5.



SKYACTIV-CHASSIS

The development of the Mazda MX-5's SKYACTIV-CHASSIS was focused on achieving superior handling and stability, with faithful responses in every driving situation. The vehicle's posture has been crafted for flawless cornering, acceleration and braking to engage in a harmonious conversation with the open road.



SKYACTIV-BODY

The new Mazda MX-5's SKYACTIV-BODY is assembled with materials explicitly selected to keep it light yet rigid. Constructed from a combination of ultra-high tensile steel and high-strength aluminium, the body is designed with integrity to be strong without bulk. The high-strength SKYACTIV-BODY is engineered to minimise harm in the event of a collision. Front airbags for both passengers come as standard, and side airbags with head-protecting cells safeguard against impact even with the top down.



Unleash pure performance



At your fingertips

Conveniently located between the driver and passenger, the multi-function commander allows safe operation of MZD Connect.



Online on the move

MZD Connect allows you to bring your online world with you, including music subscription services like Pandora and Stitcher.

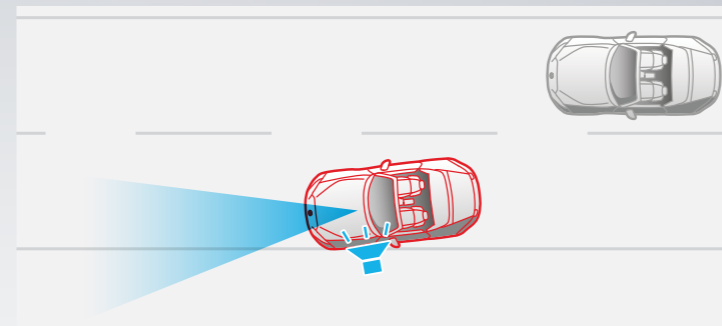
The control centre of your driving universe

Mazda's on-board infotainment system, MZD Connect, links your smartphone via Bluetooth® so you can access your music, contacts and social networks from a single screen. Switch between audio and Satellite Navigation with the intuitive central dial of the multi-function commander. The Mazda MX-5 is also available with a premium 9-speaker Bose® sound system that features a subwoofer and headrest speakers for the passenger. Jointly developed with Bose®, the exclusive system is designed to produce stunning sound quality, even with the top down. The USB and Bluetooth®-compatible unit also supports audio playback from iPods and other portable audio devices.



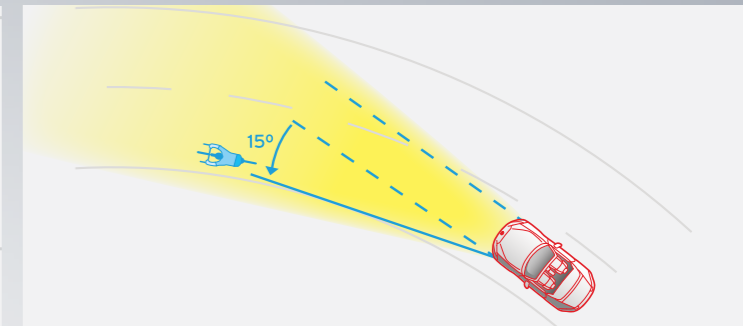
Drive with confidence

Development of the Mazda MX-5 focused on creating an exhilarating drive while also maximising safety and driver peace of mind. The addition of i-ACTIVSENSE advanced safety technologies give you even more confidence, with Adaptive Front Lighting System (AFS), Lane Departure Warning (LDW) and Blind Spot Monitoring (BSM) available as standard. On inclines, Hill Launch Assist (HLA) keeps your brakes on momentarily for smooth take-offs. Maintain control in emergency braking situations with Dynamic Stability Control (DSC), which kicks in to assist steering. Traction Control System (TCS) limits skidding. Limited-Slip Differential (LSD) also comes as standard, applying equal torque to both wheels to minimise wheel-spin (MT only). Armed with the latest in safety aids, you can enjoy every thrilling drive with confidence.



Lane Departure Warning (LDW)

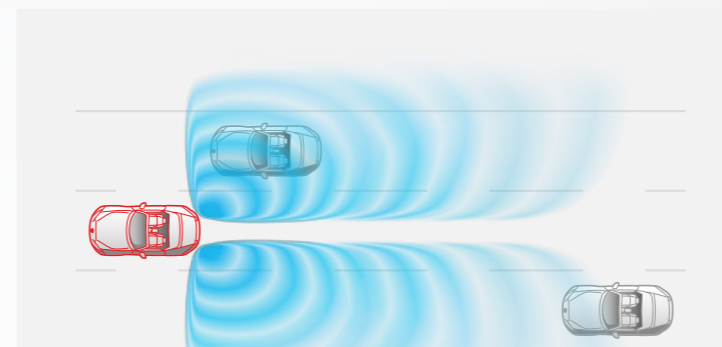
Using a windscreen-mounted camera to monitor road lane markings, LDW sounds an audible warning if you're about to stray from your lane.



Adaptive Front-Lighting System (AFS)

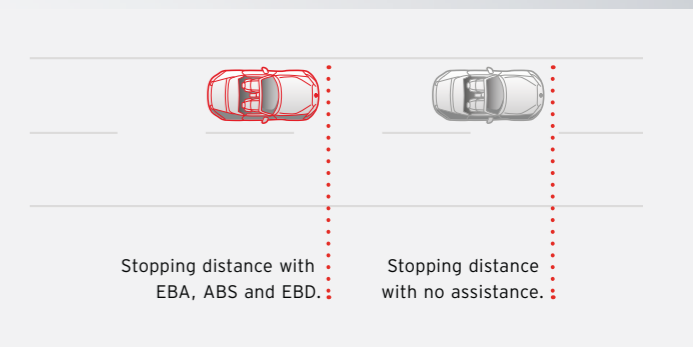
The powerful LED headlamps swivel up to 15 degrees in the direction you're steering, revealing more of the corner.

Standard across the range.



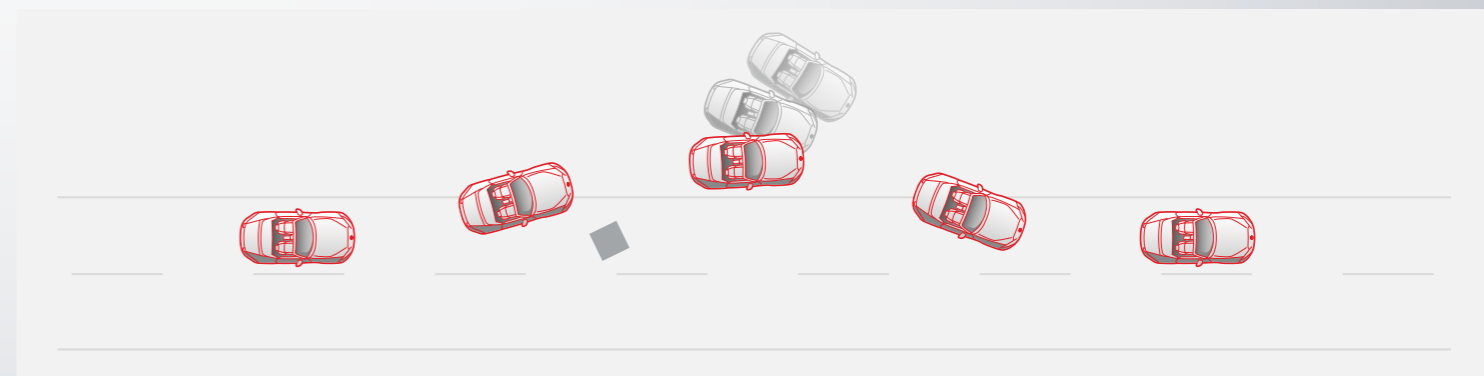
Blind Spot Monitoring (BSM)

By scanning external mirrors' blind spots, radars detect any unseen vehicles to help you avoid making hazardous lane changes. LED icon on the relevant mirror is accompanied by a warning beeper.



Advanced electronic braking

ABS brakes feature Electronic Brake-force Distribution (EBD), which matches braking to vehicle load, while Emergency Brake Assist (EBA) boosts stopping power when emergency braking is sensed. An Emergency Stop Signal (ESS) activates the hazard lights to warn following drivers of sudden deceleration.



Safety reflex

Maintain control in an emergency braking situation with Dynamic Stability Control (DSC) which kicks in to assist steering. Traction Control System (TCS) limits skidding.



MAZDA MX-5 RF 2.0L ROADSTER COUPE AT

2.0L RF features include:

- Max power 118kW @ 6000rpm
- Max torque: 200Nm @ 4600rpm
- Advanced keyless entry
- Advanced keyless push-button engine start
- Airbags SRS: front (driver and passenger) and side
- Bluetooth® hands-free phone and audio capability
- Retractable hard-top
- Climate control air conditioning
- Cruise control
- Daytime running lamps (LED)
- Emergency Stop Signal (ESS)
- Headlamps (LED)
- Headlamps auto on/off function
- Adaptive Front Lighting System (AFS)
- Hill Launch Assist (HLA)
- i-Stop Standard
- Leather seats
- Leather-wrapped: steering wheel, handbrake handle and gearshift knob
- Limited Slip Differential (LSD)
- Internet radio integration (Pandora®, Stitcher™ and Aha™)
- Multi-function commander control
- Navigation system
- Black coloured mirrors
- Premium Bose® 203 watt amplifier with 9 speakers
- Rain-sensing wipers
- Rear-view mirror with auto dimming function
- 7-inch touchscreen display (MZD Connect)
- 17-inch Alloy wheels
- Lane Departure Warning (LDW)
- AT Shift switch
- Blind Spot Monitoring (BSM)



Be seen

LED daytime running lamps make you more visible to other drivers.



Where to next?

Relax and enjoy the drive with satellite navigation that's mapped out the journey for you.



Touch the sky

One of the world's fastest roof opening- and closing times, all with the push of a button.



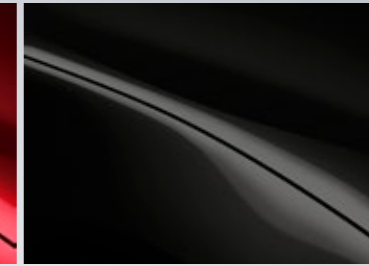
Body colours



Crystal White Pearl Mica



Soul Red Metallic



Jet Black Mica



Machine Grey Metallic

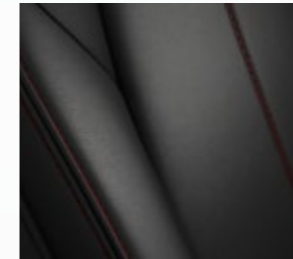


Blue Reflex Mica



Ceramic Metallic

Interior trims



Black leather

Enjoy the ***MAZDA MX-5*** with confidence

■ 3-Year ***MAZDA*** Unlimited Kilometre Warranty

Every Mazda is designed and built to the highest standards of performance and reliability. To give you further reassurance on how much we believe in our vehicles, our Mazda vehicles are backed up by a 3-year Unlimited Kilometre Factory Warranty.

■ 3-Year ***MAZDACARE*** Roadside Assistance

Mazda cares about offering you peace-of-mind motoring. That is why we offer a 3-year Unlimited Roadside Assistance Plan to keep you moving. It includes toll-free calls and services such as free towing rescue due to minor or major mishaps and emergency medical help.

■ 3-Year ***MAZDACARE*** Unlimited Kilometre Service Plan

MazdaCare has designed a Service Plan to suit your needs. It covers scheduled services for 3 years regardless of your mileage. The Service Plan operates alongside the Mazda Unlimited Kilometre Warranty.

SPECIFICATION

Mazda MX-5	2.0L Roadster Coupe 6AT
Powertrain	
Engine type	2.0 liter inline 4-cylinder 16-valve DOHC S-VT (SKYACTIV-G)
Bore and stroke	83.5 x 91.2
Compression ratio	13,0
Engine capacity	1998
Transmission	6-Speed automatic
Power (kW @ rpm)	118 @ 6000
Torque (Nm @ rpm)	200 @ 4600
CO ₂ Emissions (g/km)	156
Emission standard	Euro stage IV
i-STOP	Std
Fuel consumption – combined (litres/100km)	6,7
Fuel tank capacity (L)	45
Performance	
0 – 100 km/h (seconds)	8,6
Top speed (km/h)	194
Transmission	
Type	6-speed automatic
Gear ratio 1st	3,538
Gear ratio 2nd	2,060
Gear ratio 3rd	1,404
Gear ratio 4th	1,000
Gear ratio 5th	0,713
Gear ratio 6th	0,582
Reverse	3,168
Final drive	3,454
Chassis	
Suspension type – front	Double wishbone
Suspension type – rear	Multi-link
Brake type – front	Ventilated disc
Brake type – rear	Solid disc
Diameter – front	280
Diameter – rear	280
Steering – type	Rack-and-pinion
Turning circle curb to curb – diameter (m)	10,04
Wheels and tyres	
Wheel type	Alloy
Tyre size	205/45R17
Wheel size	17X7J
Tyre repair kit	Std
Weights and capacities	
Gross Vehicle Mass (GVM) (kg)	1318
Exterior dimensions (mm)	
Length (mm)	3915
Width (mm)	1735
Height (mm)	1235
Wheelbase (mm)	2310
Front track (mm)	1495
Rear track (mm)	1505
Front overhang (mm)	760
Rear overhang (mm)	845
Ground clearance – Laden/Unladen (mm)	135/150
Exterior	
Headlamps	LED type
Headlamp auto on/off	Std
Adaptive Front Lighting System (AFS)	Std
Daytime running lights	Std
Retractable hard-top	Std

Mazda MX-5	2.0L Roadster Coupe 6AT
Power windows	Std
Parking sensors – rear	Std
Exterior mirrors	Power adjustable
Interior	
Air conditioning (climate control)	Std
Cruise control	Std
AT Shift switch (paddle shift)	Std
Instrument panel light dimmer	Std
Map-reading spot lamps	Std
Leather-wrapped: gear shift knob, steering wheel and handbrake handle	Std
Seat trim	Black leather
Smart advanced keyless entry	Std
Smart keyless push-button engine start	Std
Tilt adjustable steering wheel	Std
Vanity mirrors with illumination – front	Std
Wipers	Rain sensing
Infotainment	
MZD Connect system with 7-inch display screen	Std
Satellite navigation	Std
Bluetooth® hands-free system	Std
BOSE® speaker system	Std
Speaker quantity	9
Steering wheel audio controls	Std
Safety and security	
Airbags SRS: driver and passenger	Std
Anti-lock Braking System (ABS)	Std
Burglar alarm system	Std
Child restraint anchor points	Std
Dynamic Stability Control (DSC)	Std
Electronic Brake-force Distribution (EBD)	Std
Emergency Brake Assist (EBA)	Std
Hill Launch Assist (HLA)	Std
Lane Departure Warning (LDW)	Std
Blind Spot Monitoring (BSM)	Std
Engine immobiliser	Std
Limited Slip Differential (LSD)	Std
Remote central locking (2 transmitters)	Std
Seat belt warning (driver)	Std
Seat belt 3-point lap-sash (both seats)	Std
Seat belt (front) with pretensioners, load-limiters and height adjustable shoulder anchorages	Std
Side impact door beams	Std
Super lock system	Std
Traction control system	Std
Whiplash-minimising front seats	Std
MazdaCare	
Service plan	3 Years/Unlimited km
Service intervals	15000 km
Warranty	3 Years/Unlimited km
Roadside assistance	3 Years/Unlimited km



mazda

ZOOM-ZOOM



3
YEAR
UNLIMITED KM
WARRANTY &
SERVICE PLAN

MAZDA MX-5

mazda.co.za     | The impossible made possible.